

INSTRUCTION MANUAL

PERCOLATOR

REF : 317-1000 / 317-1010 / 317-1015



To ensure proper use of this appliance and your safety, please read the following instructions completely before operating this appliance.

English – Original





Index


Warnings & Precautions	3
Technical Data	3
Recognizing the Machine	4
Operation Instruction	4
Maintenance	5
Exploded view and spare parts list	6
Circuit Diagram	8
Standards and directives	9
Machine and packaging disposal	9

1. WARNINGS & PRECAUTIONS


The following warnings and precautions must be observed.

- Never immerse the machine in the water. If the machine has been soaked, it must be dried and checked by specialist before using it again.
- Before installation, you should read the technical data
- Only unit use at indoor of horizontal table.
- User should stay in the vicinity of the machine while machine is in operation.
- When the machine is in use, some parts of the machine are very hot. Be sure does not to touch the hot parts.
- The power cord must be replaced by qualify person.
- Unplug the Cord, when the Machine is being not used.
- The minimum volume to operate must up to 1/3 of the maximum capacity.
- The Power cord should be replaced by allowed qualified operator.
- In the following pages, all the important items are marked by  for your attention.

 Caution! Hot Surface!

 Disclaimer: The Manufacturer will accept no liability for any injury or damage caused by incorrect usage of the machine or by improper operation contrary to information given in this Instruction Manual.

2. TECHNICAL DATA

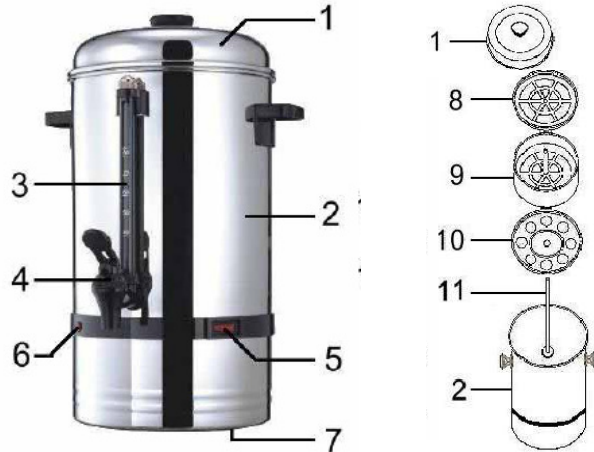
 Due to this instruction book is for common use, be sure to check to "Rating Plate" On the unit before you using this unit.

		317-1000	317-1010	317-1015
Volts		230 V	230 V	230 V
Watts	Brewing	1.5 kW	1.5 kW	1.5 kW
Content	With filter holder	6.5 L	12 L	15 L
Frequency		50~60 Hz	50~60 Hz	50~60 Hz
Preparation time		After 25 min.	After 45 min.	After 60 min.
Process temperature		94~97°C	93~96°C	92~95°C
Holding temperature after one hour		Up to 88°C		

3. RECOGNIZING THE MACHINE

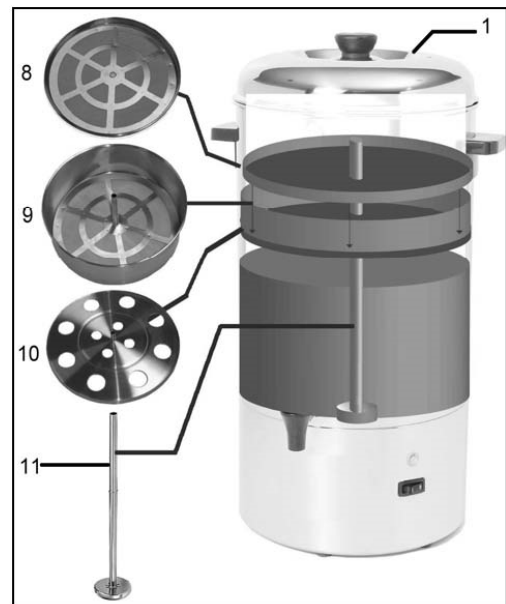
Please check the following Packing List before installation :

1. Cover
2. Urn Body
3. Level Indicator
4. Faucet
5. Power Switch
6. Indicator Lamp
7. Base of urn
8. Basket Cover
9. Filter Basket
10. Basket Tray
11. Percolator Tube



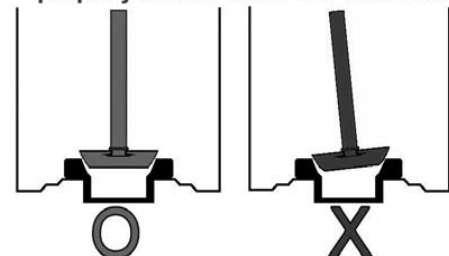
4. OPERATION INSTRUCTION

1. Clean the Filter Basket, Cover, Percolator Tube and inside of tank with a non-abrasive detergent.
2. Pour cool water into the Urn to fill at least half of total capacity of the Urn
3. Place the grounded coffee in the **Filter Basket** (9)
4. Cover it with the **Basket Cover** (8).
5. Place the **Percolator Tube** (11) and the **Basket Tray** (10) into the Urn.
6. Make sure the foot of the **Percolator Tube** (11) is Positioned firmly on the CAVE of heater at Urn.
7. Put the **Filter Basket** into the **Percolator Tube** (11) until it nests on the **Basket Tray** (10).
8. Plug the cord into the electric outlet and turn the **Power Switch** (5) «ON», the lamp in the switch Should light up now.
9. About 20~50 minutes later, the **Indicator Lamp** (6) lights up, the brewing process is completed.
10. The second Heating System will operate automatically to keep the coffee warm, coffee now ready to be served.
11. When there are only about 3 cups of coffee left in the Urn, please turn the **Power Switch** (5) «OFF» and unplug the Cord from the electric outlet



 Do not open the Lid of appliance when unit during use!

CAUTION: The brew stem must be properly seated in the urn heat well



5. MAINTENANCE

Cleaning:

It is important that the Machine and its accessories be kept clean after using.

For dirt or smudges on the Machine, it is better to clean them with a soft damp cloth, and if necessary, with a non-corrosive and/or non-abrasive detergent or cleaner.

De-sediments:

On areas on the Heating Element, hard water will cause chalk and limestone will to accumulate over time. To keep it in the best condition and ensure each coffee brewing will result in best-tasting coffee, we recommend De-sediment when you find there are scale sediments at the bottom of the machine.

⚠ Due to the lime may be will built up much fast than you imagine, we do suggest use to De-sediments even week for once at least to ensue the unit cane works normally.

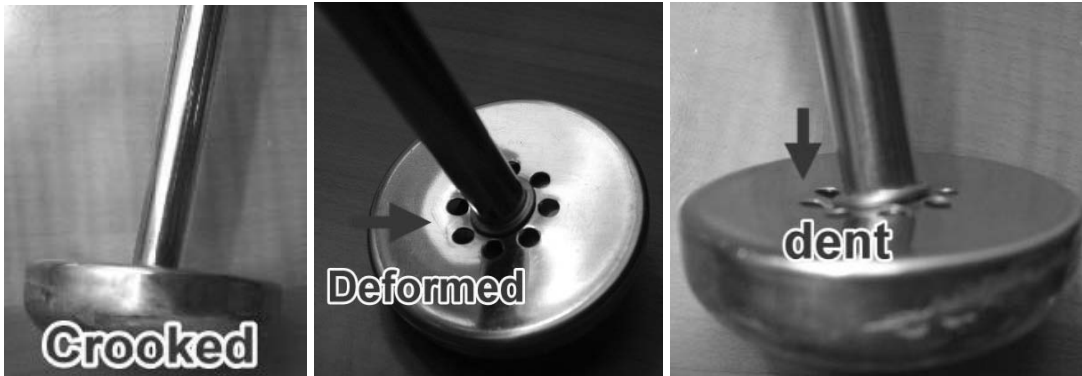
⚠ In case, if the units stop works (no power) during the normal operate suddenly, but when the unit cooling down the unit is re-workable again, than it is very probably causing the limes built up. Please run the De-sediment process.

⚠ Please always check the washer at the bottom of stem able to moving freely and without damaged!



Washer at the bottom of stem!

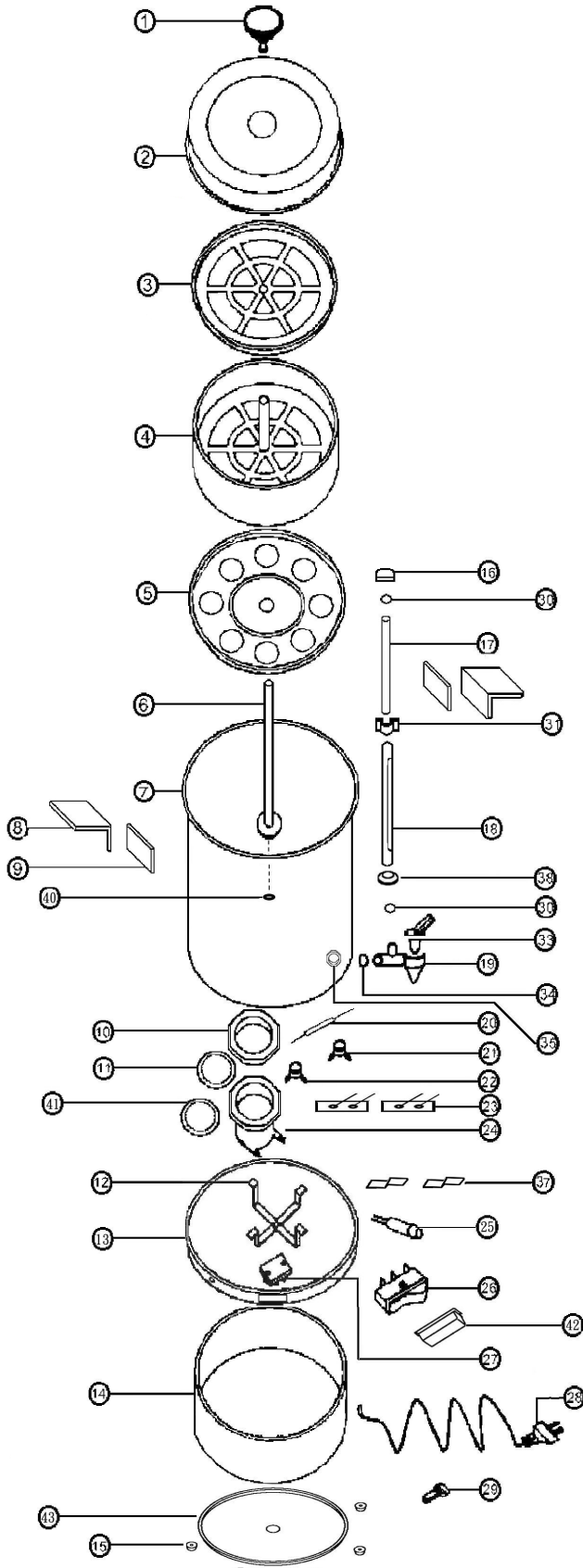
⚠ The following damaged on the Stem May causing the unit not operate properly, such as only get hot water at result or the coffee test is lighter than usual. And you may Contact your service agent to eliminate for this problem.



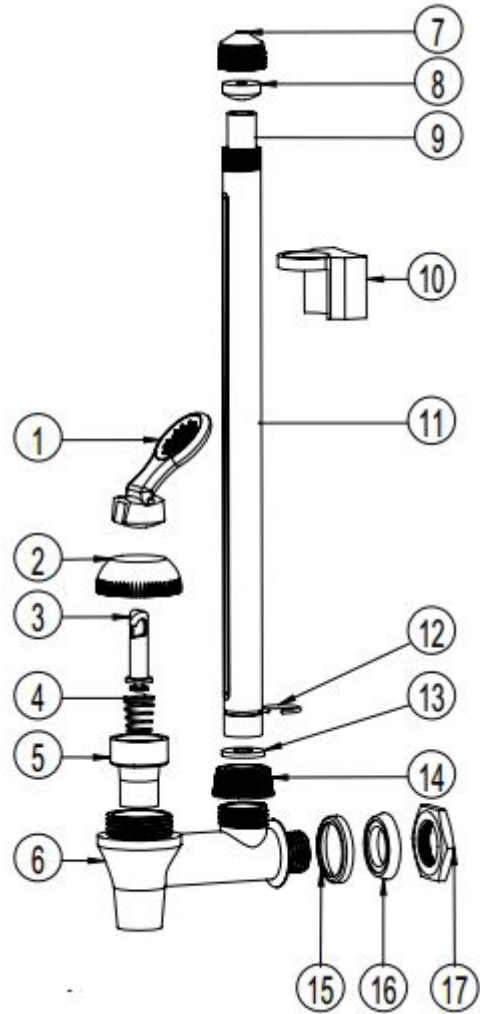
6. EXPLODED VIEW AND SPARE PARTS LIST

N°	Description	REF L2G	N° of PIC 1	N° of PIC 2
1	Cap's shaft(knob)		1	
2	Urn's Cap for 317-1000	317-10002	2	
3	Urn's Cap for 317-1010/1015	317-10102	2	
4	Basket Cover for 317-1000	317-3046	3	
5	Basket for 317-1000		4	
6	Basket complete set 317-1000		3&4	
7	Basket Cover for 317-1010/1015	317-30461	3	
8	Basket for 317-1010/1015	317-3003	4	
9	Basket tray for 317-1010/1015		5	
6	Basket complete set 317-1000		3&4	
10	Basket complete set 317-1010/1015		3&4&5	
11	Pump Bar	317-3011	6 & 40	
12	Pump Bar	317-3018	6 & 40	
13	Pump Bar	317-3019	6 & 40	
14	Urn' handle		8	
15	Fixer of Urn's handle with rivets		9	
16	Screw of Heating Element		10	
17	Sealing of Heating Element		11	
18	Alu Washer for Heating Element		41	
19	Heating Element		24	
20	Heating Element cpl.		10,11,41,24	
21	Base's Brace		12	
22	Base's Brace		12	
23	Waist Ring	317-3012	13	
24	Waist Ring	317-3013	13	
25	Rubber Heel	175-5097	15	
26	Upper Screw of gauge		16	7
27	Upper Sealing of gauge		30	8
28	Fixer of gauge		31	10
29	Glass tube 317-1000	317-3016	17	9
30	Glass tube 317-1010	317-3017	17	9
31	Glass tube 317-1015	317-3020	17	9
32	Sleeve of gauge 317-1000		18	11
33	Sleeve of gauge 317-1010		18	11
34	Sleeve of gauge 317-1015		18	11
35	Snap Ring of Sleeve			12

36	Lower Sealing of gauge		30	13
37	Lower screw of gauge		38	14
38	Gauge cpl. 317-1000			7 -- 14
39	Gauge cpl. 317-1010			7 -- 14
40	Gauge cpl. 317-1015			7 -- 14
41	Tap handle only		19	1.0000
42	Screw of faucet handle		19	2.0000
43	shaft of tap		19	3.0000
44	Spring of tap		19	4.0000
45	Sealing of hydrant		33	5.0000
46	Tap handle cpl.			1 -- 6
47	Plastic body of Faucet		19	6.0000
48	Spacing ring of Faucet		19	15.0000
49	Sealing of Faucet		34	16.0000
50	Fixing Screw of Faucet		35	17.0000
51	Plastic Faucet Set	317-30001		1--6 13--14
52	Fuse		20	
53	Low temperature Thermostat		21	
54	High temperature Thermostat	317-3012	22	
55	Mica Heating Plate		23	
56	Mica Heating Plate Fixer		37	
57	Indication Lamp	317-3004	25	
58	Switch with Indicator		26	
59	Switch Protector cover	317-3045	42	
60	Terminal Block		27	
61	Power cord with plug		28	
62	Wire clip		29	
62	Pince métallique			

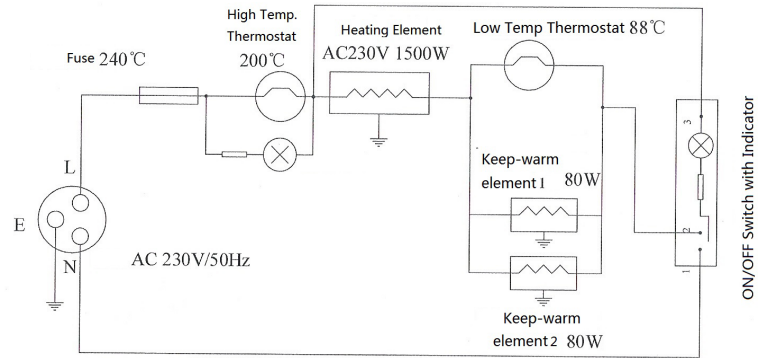


Picture 1



Picture 2

7. CIRCUIT DIAGRAM



8. STANDARDS AND DIRECTIVES

Meaning of crossed out wheeled dustbin:

Do not dispose of electrical appliances as unsorted municipal waste, use separate collection facilities.

Contact your local government for information regarding the collection systems available.

If electrical appliances are disposed of in landfills or dumps, hazardous substances can leak into the groundwater and get into the food chain, damaging your health and well-being.

When replacing old appliances with new ones, the retailer is legally obligated to take back your old appliance for disposals at least free of charge.

The device complies with current EU standards and directives. If necessary, we will send you the corresponding declaration of conformity.

Packaging disposal

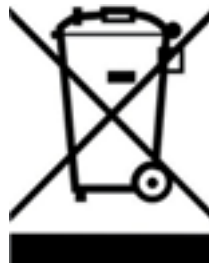
Please separate the packaging materials accordingly and return them to the responsible collection points for recycling and environmental housing.



Device disposal

once the appliance has been used up, dispose of it properly at a collection point for electrical appliances. Electrical appliances do not belong in household waste.

Your responsible administration will inform you about the addresses and opening hours of collection points. This is the only way to ensure that old appliances are properly disposed of and recycled. Thank you very much!





CE